

Serving Industry Since 1982

In 1982, Insultech was established to provide industrial, commercial, and marine insulation. In 1988, after several years of growth, The Insultech Group was created to accommodate the growing contracting needs of our customers. Today, our four unique divisions provide expertise based on decades of accumulated knowledge.

Industry Memberships:



We proudly serve the following industries:

- Aeronautica
- Aerospace
- Agri-Chemical
- Beverage & Brewing
- Cold Storage
- Build-Outs – Commercial/Office/Tenant
- Chemical
- Citrus
- Cruise
- Food Services
- Hotel & Leisure
- Hospital & Medical
- Institutional
- Petro-Chemical
- Power & Utilities
- Public & Private Schools/Universities
- Pulp & Paper
- Ship Building & Repair
- Warehouse Distribution Centers
- US Government

Serving Industry Since 1982



Cabinet Division

The Cabinet Division has established itself as a local area leader for custom commercial, residential, institutional, medical, and marine cabinetry, as well as furniture manufacturing and custom millwork installation.

Our experience and shop facilities enable us to design, consult, manufacture, and install a wide variety of custom cabinetry and millwork applications to fulfill all of our customers needs. The Cabinet Division, in affiliation with the Marine Division, enables our craftsmen to develop a wide spectrum of cross training and consulting abilities for any and all projects.

We provide design, engineering, fabrication, and installation of custom handmade cabinets. Our cabinets are fabricated using 3/4" china birch plywood, screws and staples, fully adjustable concealed hinges, and ball bearing glides.





Insulation Division

Insultech Group, Inc. has carved out a specialty niche that few can compete with due to our reputation and almost three-decade presence in this industry.

The management staff of the Insulation Division has a combined total of over 90 years experience in the insulation trade. This experience enables Insultech to accomplish large projects such as new construction, start-up facilities, and major retrofits while maintaining many long-term service contracts with a diverse and strong customer base.



Industrial Insulation

Insultech's roots began in the industrial field and this experience allows us to provide the following services to our customers: scaffold erection and leasing, asbestos abatement, acoustical components installation, sand blasting, manpower, consulting, and project management services.

Commercial Insulation

Commercial services we perform include: HVAC piping, equipment and ductwork insulation; plumbing systems insulation; as well as steam, condensate, glycol, ammonia, chill water and other process systems insulation. Our experience includes extensive work in citrus processing plants, light industrial manufacturing plants, clean rooms, food processing plants, freezer and cold storage facilities, hospital and medical facilities, warehouse distribution centers, and preventive and ongoing maintenance services.

Marine Insulation

The Insulation Division works hand and hand with our Marine Division to provide any and all marine related insulation support. The Insulation Division has performed new construction, major overhauls, emergency call-outs, and regular maintenance. Supporting the Gulf Coast for nearly three decades, The Insultech Group has the experience to meet all of your Marine Insulation needs. All insulation materials and installation procedures adhere to the requirements of USCG, ABS, Lloyds, and other regulatory agency requirements for thermal and fire rating properties as well as all IMO/SOLAS regulations.

Serving Industry Since 1982



Marine Division

The Marine Services Division has long been known throughout the Gulf Coast and Eastern Florida seaports for its quality workmanship, versatility of services, and commitment to excellence. The management staff of the Marine Services Division has over 80 years of combined experience in the marine industry. This experience enables us to accomplish large projects such as new construction vessels and major conversions, as well as emergency vessel repairs while in port.

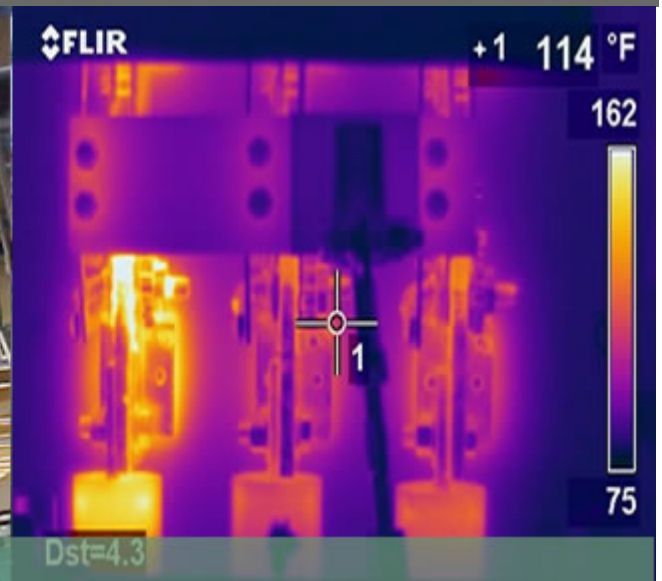
The services provided to our Marine Division customers include:

- Complete marine joiner services
- Insulation
- Flooring and deck coverings
- Cabinetry and custom millwork
- USPH compliant galley furnishings
- Fabrications and installations
- Acoustical component installations
- Window Installations & Refurbishment
- Asbestos abatement
- Glass Installations & Refurbishment
- Light metal fabrication
- HVAC ductwork fabrication and installation
- Manpower
- Material procurement
- Consulting and project management services

Our Marine office is located directly in the Port of Tampa, allowing us to provide 24-hour support for vessel emergencies.

**Marine Office
Tampa Port**
905 S. 22nd Street
Tampa, FL. 33605
(813) 241-8354
FAX (813) 242-0575





Plant Services Division

The Plant Services Division provides professionally administered predictive maintenance (PdM) services and programs as well as Contract/Outsourced Manpower.

Our management has over 70 years experience in this industrial setting, enabling us to bring to our clients cost effective PdM programs/ services and meet their work force needs.

Why a "Predictive Maintenance" Program?

Simply put, a Predictive Maintenance program is a money mover. It takes money from maintenance 'cost' and moves it to bottom line 'profit'. This avoids the added cost of equipment acquisitions, personnel training and the steep learning curve associated with the startup of a predictive maintenance program.

A properly functioning predictive maintenance program can move 25% to 30% of the maintenance expenses from the maintenance cost ledger to the company's bottom line...while also:

- Reducing breakdowns 70% to 75%
- Reducing downtime 35% to 45%
- Increasing production 20% to 25%
- Increasing ROI up to a factor of 10

Contract/Outsourced Manpower:

Plant Services currently provides in excess of 30 personnel, during normal operations, at an east coast location, for a Florida electric utility. These positions include supervision, plant operators, plant maintenance craft personnel, custodial and labor personnel, as well as administrative staffing. During planned and unplanned outages, we provide additional skilled personnel to supplement the plant forces.

Features and Services

- Engineering and Design Services
- Vibration Analysis and Dynamic Balancing
- Lubricant Analysis and Lubrication Programs
- Thermographic Profiles and Surveys
- Ultrasonic Thickness and Flaw Detection
- Ultrasonic Leak Detection
- Rotary Equipment Inspections
- Motor Circuit Analysis
- Dosimeter Testing
- Power Quality Testing
- Mechanical Support
- Contract/Outsourced Manpower
- Laser Alignment



Our Clients

[ALCOA](#)
[Black & Veatch](#)
[CF Industries](#)
[Florida Power & Light](#)
[Besco Inc.](#)
[Martin Marietta Materials](#)
[Shell Chemicals](#)
[International Paper](#)
[Weyerhaeuser](#)
[MariTrans](#)
[Kinder-Morgan](#)
[Alpha-Owens-Corning](#)
[Henkelman Construction](#)
[Energy Air](#)
[Reliant Energy](#)

[Anheuser Busch](#)
[Babcock & Wilcox Company](#)
[US Coast Guard](#)
[Progress Energy](#)
[The Mosaic Company](#)
[Exxon Mobile](#)
[Tampa Electric](#)
[Waste Management](#)
[Wheelabrator Allevar](#)
[Publix](#)
[Polk County Utilities](#)
[Tampa Bay Ship LLC](#)
[River Hawk Marine](#)
[Mid Florida Bank](#)

[FishHawk Marine](#)
[Cargill](#)
[Coca Cola](#)
[General Electric](#)
[Kraft Foods](#)
[US Navy](#)
[Trane](#)
[Weeks Marine](#)
[Georgia Pacific](#)
[Rinker](#)
[Manatee Memorial Hospital](#)
[Teco Ocean Shipping](#)
[S.I. Goldman Company](#)
[Central Maintenance and Welding](#)





Contact Us/Employment

Corporate

Samantha Lewis
Scott DeAmbrose

Industrial Division

John Wilson

Commercial Division

Tom Ashley

Marine Division

Bary Dickson
Jay Cushman

Marine Office Tampa Port

905 S. 22nd St.
Tampa, FL. 33605
(813) 241-8354
FAX (813) 242-0575

Plant Services Division

John Horn
Tom Ramsey

Cabinet Division

Adam Aungst

Employment Opportunites

The Insultech Group is always looking for qualified people for employment in all of our fields of business.

